

ScreenBeam 1100 Plus

Flexible, high-performing wireless presentation and Unified Communications (UC) platform

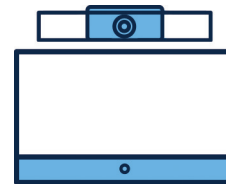
The ScreenBeam 1100 Plus is an innovative platform delivering contactless wireless presentation with web conferencing for rich content sharing.

ScreenBeam 1100 Plus with ScreenBeam Conference software wirelessly connects users to displays and room peripherals for flexible collaboration between in-room and remote meeting participants. It wirelessly connects the room camera, microphone and soundbar to the meeting host device providing the capabilities of expensive traditional room systems without the additional hardware or restrictions. Content on the room display can be easily shared to remote participants so everyone can be fully engaged. Meeting hosts can instantly launch a UC meeting using the web conferencing service of their choice. Using their personal device to drive the meeting eliminates contact with all room dongles, cables or tablets for a safe experience. Alternatively, ScreenBeam 1100 Plus can easily connect into a traditional UC room system or the room display in a non-UC room to add wireless display functionality.

When only wireless presentation is required, ScreenBeam provides app-free agnostic support for Windows, Apple and Chromebook devices. Users simply tap once to wirelessly present and markup content on in-room displays from their own device. It's easy to connect both employees and guests with three separate network interfaces that keep guests off the company network. Administrators can breathe easy with three levels of security covering every point of the connection and included ScreenBeam CMS Enterprise multi-user, role-based monitoring and management solution.



CATALOG NUMBER
SBWD1100P
ScreenBeam 1100 Plus
Wireless Display Receiver
with ScreenBeam CMS

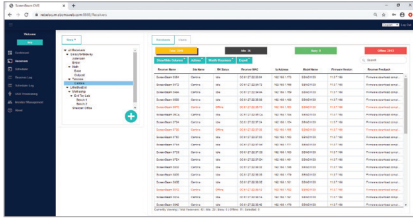


ScreenBeam 1100 Plus includes ScreenBeam Conference at no charge. Automatically pairs host device wirelessly to the room resources.

[Learn More](#)

Key Features

- ✓ Wirelessly present from laptop, tablet or smartphone wirelessly
- ✓ Supports Bring Your Own Meeting with ScreenBeam Conference Technology
- ✓ Easily integrates with existing UC Room solutions
- ✓ Native wireless display eliminates apps and dongles
- ✓ Multi-network for employee and guest connections
- ✓ Multi-View and Quick Switch Modes for effective collaboration
- ✓ Windows 10 wireless inking and touch support with ScreenBeam Ghost Inking™
- ✓ Centrally manage receivers with multi-user and role-based access included
- ✓ Integrated HTML-based digital signage player
- ✓ Flexible in-room display sharing preference including HDMI input
- ✓ Optional secured and isolated Wi-Fi hotspot



Every 1100 Plus receiver includes Central Management Enterprise software to monitor and manage ScreenBeam receivers using a standard web browser, and support multi-user and role-based access for large deployments with multiple sites and administrators. [Learn More](#)

ScreenBeam | 1100 Plus

Technical Specifications

Compatible OS/Device

Windows 10 build 1809 (and later)
macOS X 10.10 (and later)
iOS 11 (and later)
Chrome OS 74.0 (and later)
Android 4.2 (and later)

Language Support

English, French, German, Dutch, Spanish, Italian, Japanese, Korean, Simplified and Traditional Chinese

Hardware Specifications

Video	H.264 compression	
Audio	LPCM 2.0	
Resolution ¹	Up to 4K@30Hz	
Ethernet	10/100/1000-BASE-T RJ-45 LAN	
Wireless	Miracast and Local Wi-Fi Mode: 802.11ac dual-band 3x3 MIMO Network Bridge: 802.11ac dual-band 2x2 MIMO	
Authentication	WPA-PSK (TKIP)	
Protocol	WPA2-PSK (AES), PEAP-MSCHAP V2, EAP-TLS	
Interfaces	1 x HDMI Input 1 x HDMI Output 1 x Analog 3.5mm audio Output	2 x USB 2.0 Host Type-A 1 x USB 3.0 Host Type-A 1 x DC Power Jack
Content Protection ²	HDCP 2.x	
Power	Input: 12VDC, 3A Consumption: 8.4W (typical), 36W (peak)	
Dimensions	8.66 x 5.66 x 1.47 inch (220 x 144 x 37.5 millimeter)	
Temperature	Operating: 0° – 40° C (32° – 104° F), Storage: -20° – 85° C (-4° – 185° F)	
Humidity	Operating: 20 – 80% non-condensing, Storage: 10 – 90% non-condensing	

Regulatory and Compliance

Approved: FCC, UL, IC ISED, CE RED, RoHS, and C-Tick

Warranty

- Limited three-year manufacturer hardware for product purchased after 1/2/2022
- Limited one year manufacturer hardware for product purchased on or before 1/2/2022

Industry Leader

ScreenBeam Inc., a leading wireless display and collaboration provider, delivers an app-free screen sharing experience on any modern device to bring intuitive wireless collaboration into any meeting space or classroom. ScreenBeam is Microsoft's co-engineering partner for wireless display enabling wireless Office 365 experiences.

ScreenBeam solutions are used as the validation platform for wireless display functionality by companies like Microsoft and leading PC OEM and device companies. Headquartered in Santa Clara, CA, ScreenBeam has offices across the United States, Europe and Asia.

[screenbeam.com](https://www.screenbeam.com)

© 2022 All rights reserved. ScreenBeam and the ScreenBeam logo are registered trademarks owned by ScreenBeam Inc. All other names are properties of their respective owners. Specifications subject to change without notice. 041222-v21

1. Actual display resolution and quality depend on the wireless/network environment
2. Content protection is not available for macOS/iOS



ScreenBeam®